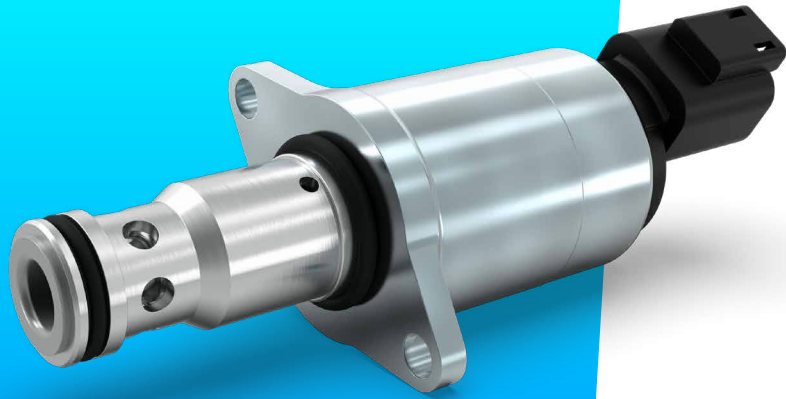


Inverse Pressure Relief Valve [IPRV]



Product classification

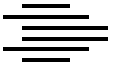
| Name |
|------|
| ATEX |
| IPH |
| IPRV |

Proportional
valves

Directional
valves

Smart
products

Special
designs



Hydraulic Data

| | |
|-------------------------|--|
| Max pressure pump | $P_p = 150 \text{ bar}$ |
| Max pressure tank | $P_T = 35 \text{ bar}$ |
| Nominell flow | 40 l/min |
| Flow range | 5 to 70 l/min |
| Hysteresis | Max. 8 bar |
| Contamination level | Min Filtration: 20/18/15 According to ISO 4406 |
| Fluid | Mineral Oil According to DIN 51524 |
| Temperature range fluid | -30°C to +105°C |
| Leakage (internal) | < 3 l/min (de-energized; @ a pump pressure ramp from 0 to 120 bar) |
| Filterscreen size | none |

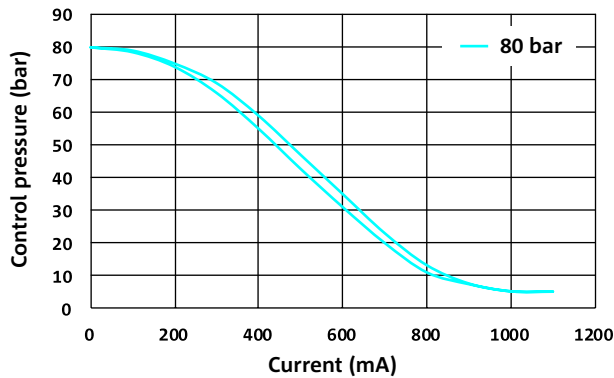
Electrical Data

| | | |
|------------------------------|---|-----------------------|
| Voltage | 12 V | 24 V |
| Voltage range | 9 to 16 V | 16 to 32 V |
| Resolution | 1200 mA | 600 mA |
| Resistance | $5,3 \Omega \pm 5\%$ | $21,2 \Omega \pm 5\%$ |
| Control signal (recommended) | Current control PWM 200 Hz recommended | |
| Connector | AMP Junior Timer Deutsch Connector DT04-2P | |
| Protection class | up to IP6K6 / IPX7 | |

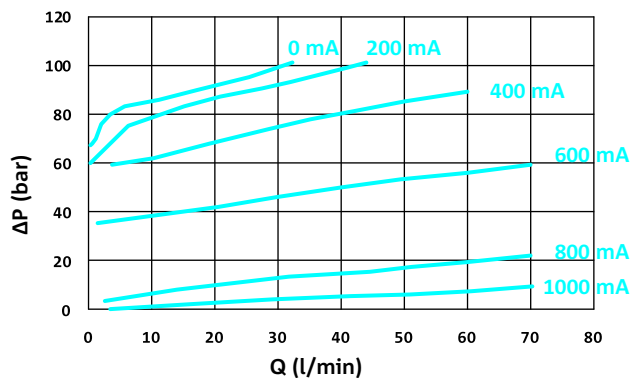
* The reported data are measured @ $P_p=35 \text{ bar}$ and an oil viscosity of 32 cSt

Current vs. Pressure (average characteristic)

P-I CURVE (12 V)

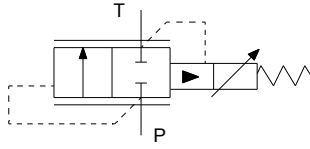


Flow characteristics (Average characteristic)





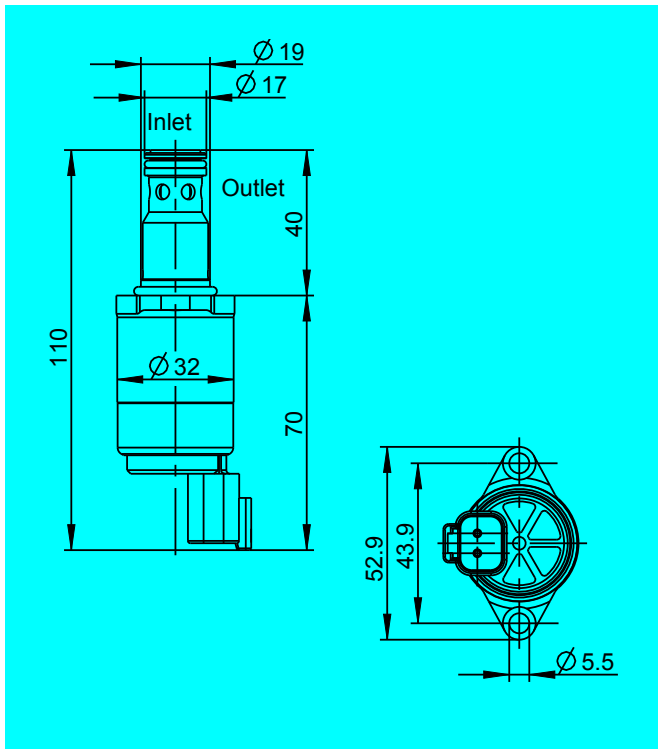
Hydraulic schematic



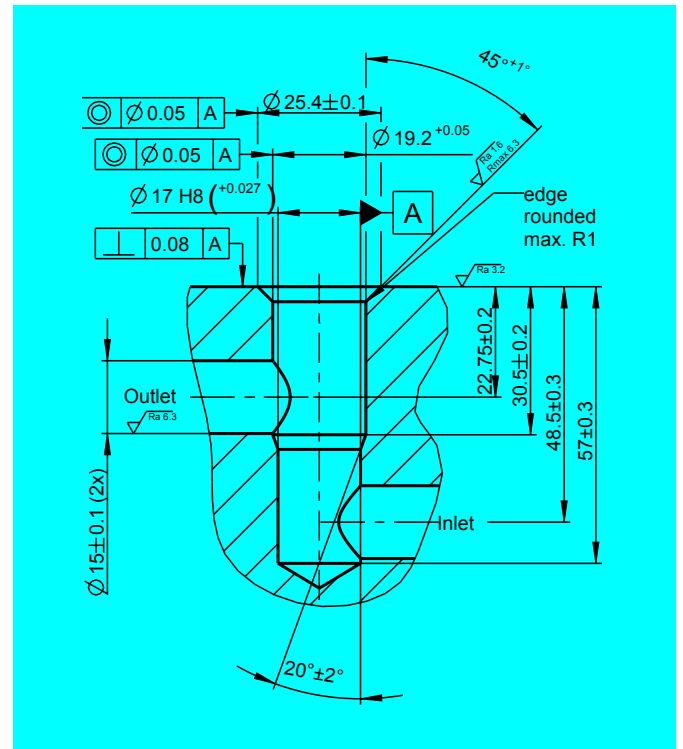
Additional data

| | |
|--|---|
| Weight | approx. 270 g |
| Mounting position (recommended) | any |
| MTTF_d-value | 150 years |
| Reference | Valve specifications according to Thomas LHP 85 |

Dimensions with Deutsch Connector (All dimensions in mm)

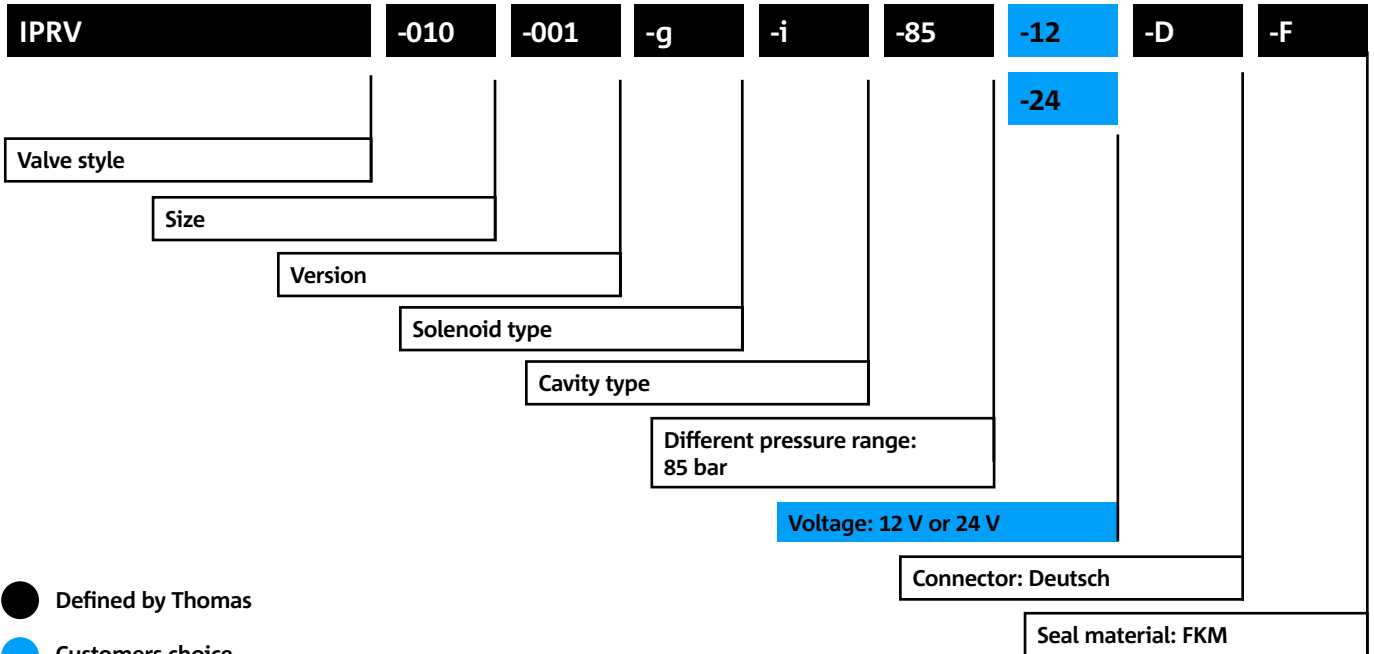


Cavity Dimensions (All dimensions in mm)





Model code



- Defined by Thomas
- Customers choice

CONTACT DETAILS

Michael Lutz

Thomas Magnete GmbH

Innomotion Park 3
57562 Herdorf, Germany

Tel. +49 2744 929-220

michael.lutz@thomas-magnete.com
www.thomas-group.com

DISCLAIMER

The presented information is based on current knowledge and provides only non-binding information to the customer. Any liability in connection with this information is excluded. It is the responsibility of the customer to determine the suitability and appropriateness of the product for his intended purpose. We reserve the right to change the product with regard to technical progress and new developments.